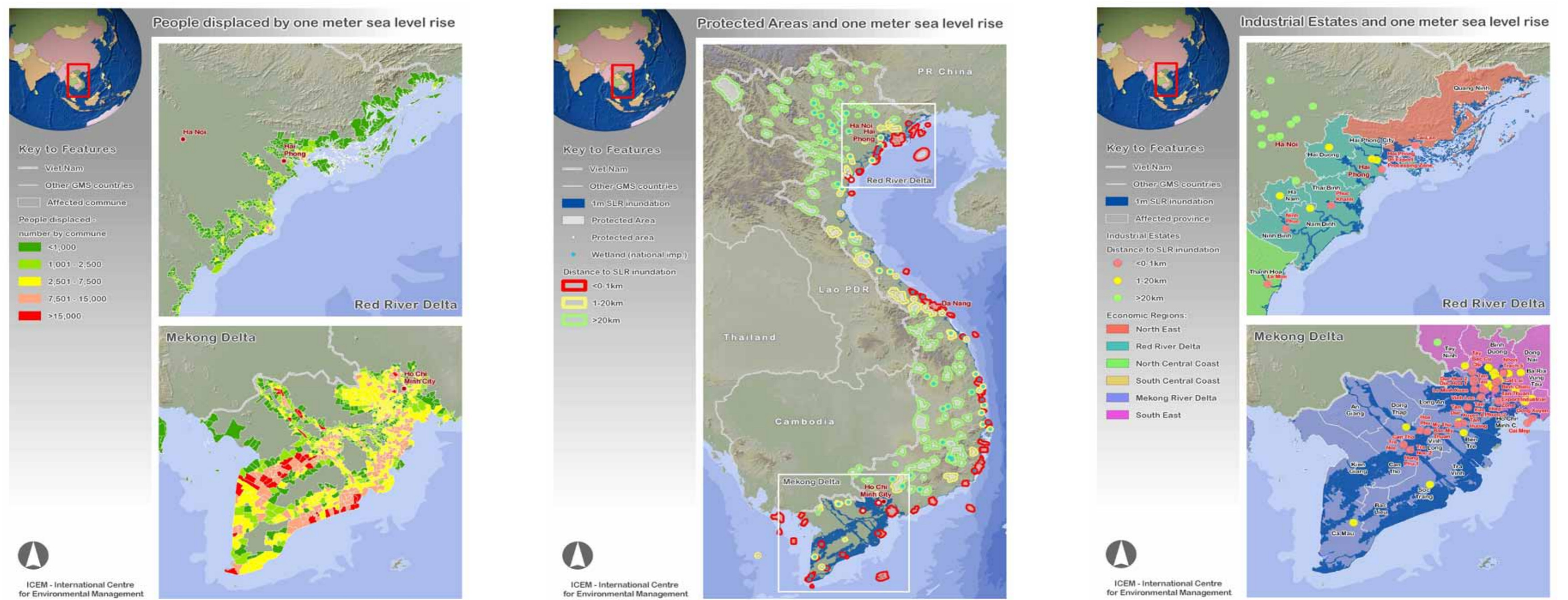


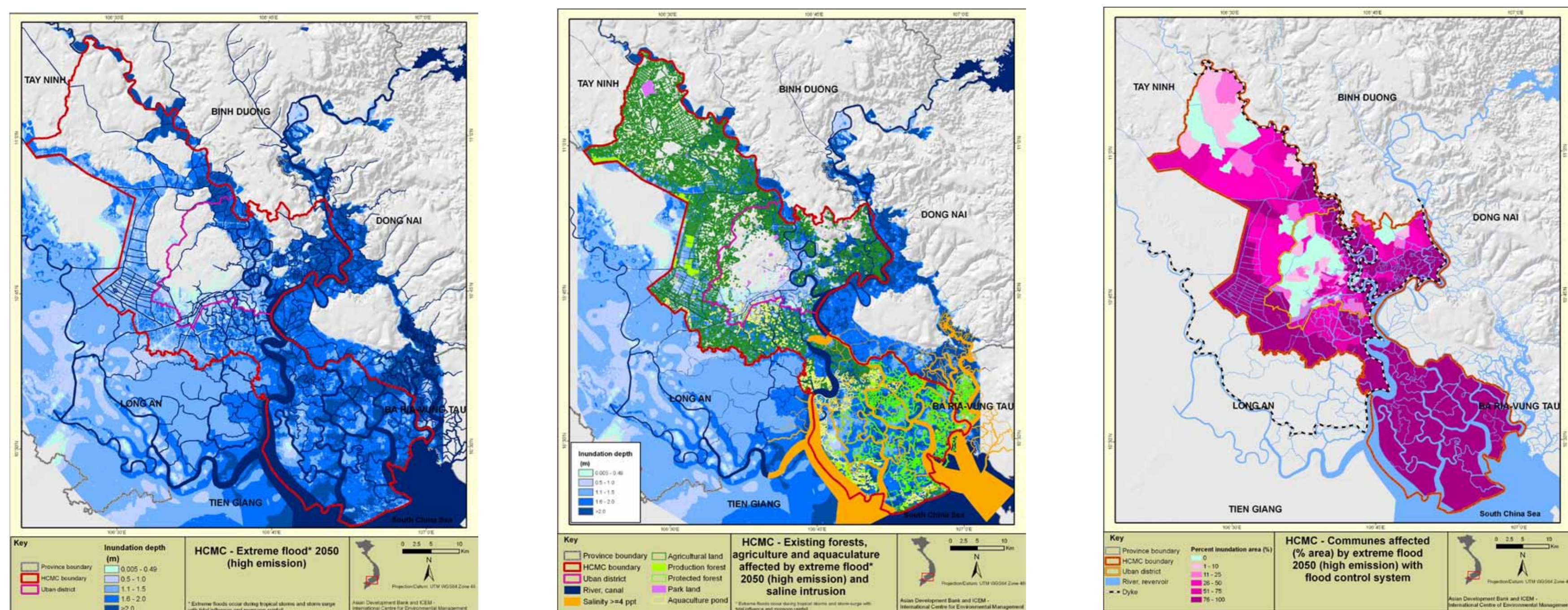
ICEM - International Centre for Environmental Management

Studies on climate change effects on development sectors, communities and sensitive areas including climate and hydrological modelling, GIS analysis and impact assessment in Vietnam and the Mekong region

SLR IN VIETNAM



The ICEM “Rapid Assessment of the Extent and Impact of Sea Level Rise in Vietnam” provides geospatial analysis on the most important locations and issues when planning for sea level rise (SLR). The study also proposes fields for further development to achieve more reliable and detailed impact and vulnerability assessments over time periods that are relevant to national and local planning.



HCMC STUDY

The ADB-ICEM HCMC Adaptation to Climate Change Study is an initial step in a planned response by the HCMC authorities to the challenges it faces in adapting to climate change. The study explores climate threats and their impact on areas, communities and sectors, including agriculture, industry, forestry, public health and population growth in the city and makes recommendations for adaptation options.